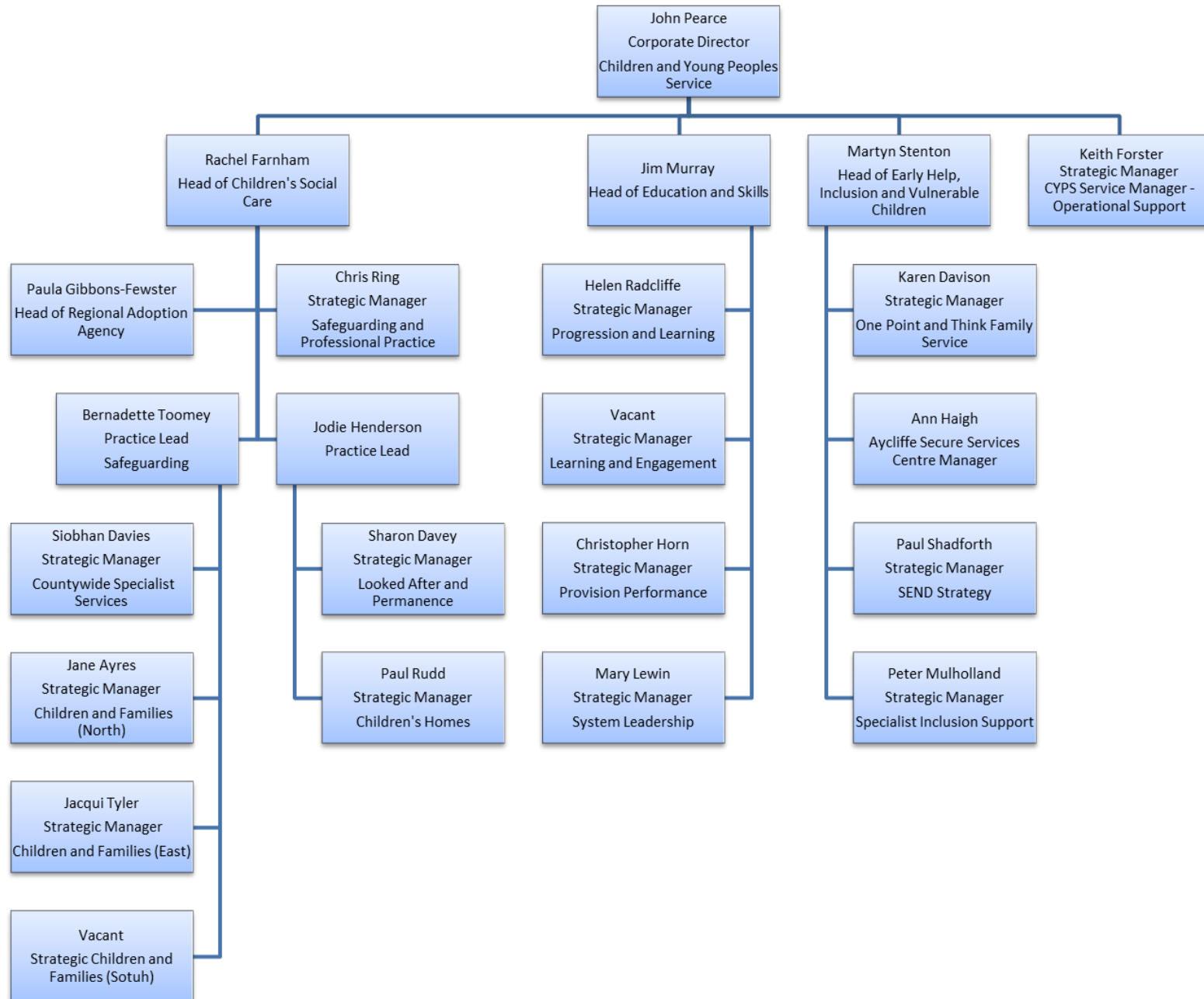


# Children and Young Peoples Services Management Structure



## Text version of Children and Young People Services Structure

- John Pearce - Corporate Director Children and Young Peoples Services
  - Rachel Farnham, Head of Children's Social Care
    - Paula Gibbons-Fewster – Head of Regional Adoption Agency
    - Chris Ring – Strategic Manager Safeguarding and Professional Practice
    - Bernadette Toomey – Practice Lead Safeguarding
      - Siobhan Davies – Strategic Manager First Contact and Countrywide Services
      - Jac Tyler – Strategic Manager Children and Families (East)
      - Jane Ayres – Strategic Manager Children and Families (North)
      - Vacant - Strategic Manager Children and Families (South)
    - Jodie Henderson – Practice Lead
      - Sharon Davey – Strategic Manager Looked After and Permanence
      - Paul Rudd – Strategic Manager Children's Homes
  - Jim Murray, Head of Education and Skills
    - Helen Radcliffe - Strategic Manager Progression and Learning
    - Vacant – Strategic Manager Support and Development
    - Christopher Horn – Strategic Manager Provision
    - Mary Lewin – Strategic Manager System Leadership
  - Martyn Stenton, Head of Early Help, Inclusion and Vulnerable Children
    - Karen Davison – Strategic Manager One Point and Think Family Service
    - Ann Haigh – Aycliffe Secure Services Centre Manager
    - Paul Shadforth – SEND Looked After and Vulnerable Groups
    - Peter Mulholland – Strategic Manager Specialist Inclusion Support
  - Keith Forster – Strategic Manager CYPS Service Manager Operational Support