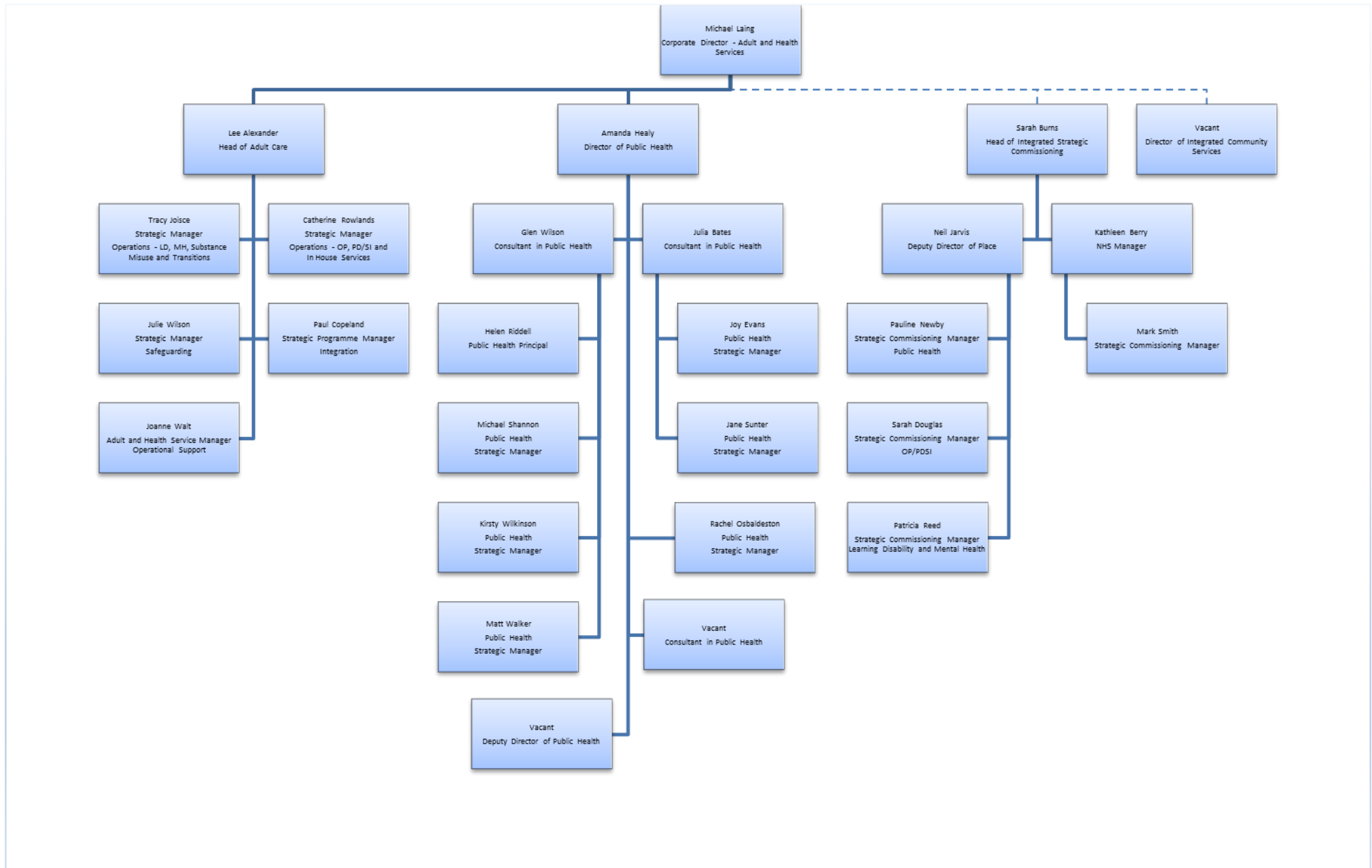


Adult and Health Services Management Structure



Text version of Adult and Health Services Structure

- Michael Laing - Corporate Director Adult and Health Services
 - Vacant – Director of Integrated Community Services
 - Lee Alexander, Head of Adult Care
 - Tracy Joice – Strategic Manager Operations LD/MH/Substance Misuse and Transitions
 - Catherine Rowlands – Strategic Manager Operations OP/PDSI and in house services
 - Julie Wilson – Strategic Manager Safeguarding
 - Paul Copeland – Strategic Programme Manager Integration
 - Joanne Walt – Adult and Health Service Manager Operational Support
 - Amanda Healy, Director of Public Health
 - Glen Wilson – Consultant in Public Health
 - Helen Riddell – Public Health Principal
 - Michael Shannon – Public Health Strategic Manager
 - Kirsty Wilkinson – Public Health Strategic Manager
 - Matt Walker – Public Health Strategic Manager
 - Julia Bates – Consultant in Public Health
 - Joy Evans – Public Health Strategic Manager
 - Jane Sunter – Public Health Strategic Manager
 - Rachel Osbaldeston – Public Health Strategic Manager
 - Vacant - Deputy Director of Public Health
 - Vacant – Consultant in Public Health
 - Sarah Burns, Head of Integrated Strategic Commissioning
 - Neil Jarvis – Deputy Director of Place
 - Sarah Douglas – Strategic Commissioning Manager OP/PDSI
 - Pauline Newby – Strategic Commissioning Manager Public Health
 - Patricia Reed – Strategic Commissioning Manager Learning Disability and Mental Health
 - Kathleen Berry – NHS Manager
 - Mark Smith – Strategic Commissioning Manager