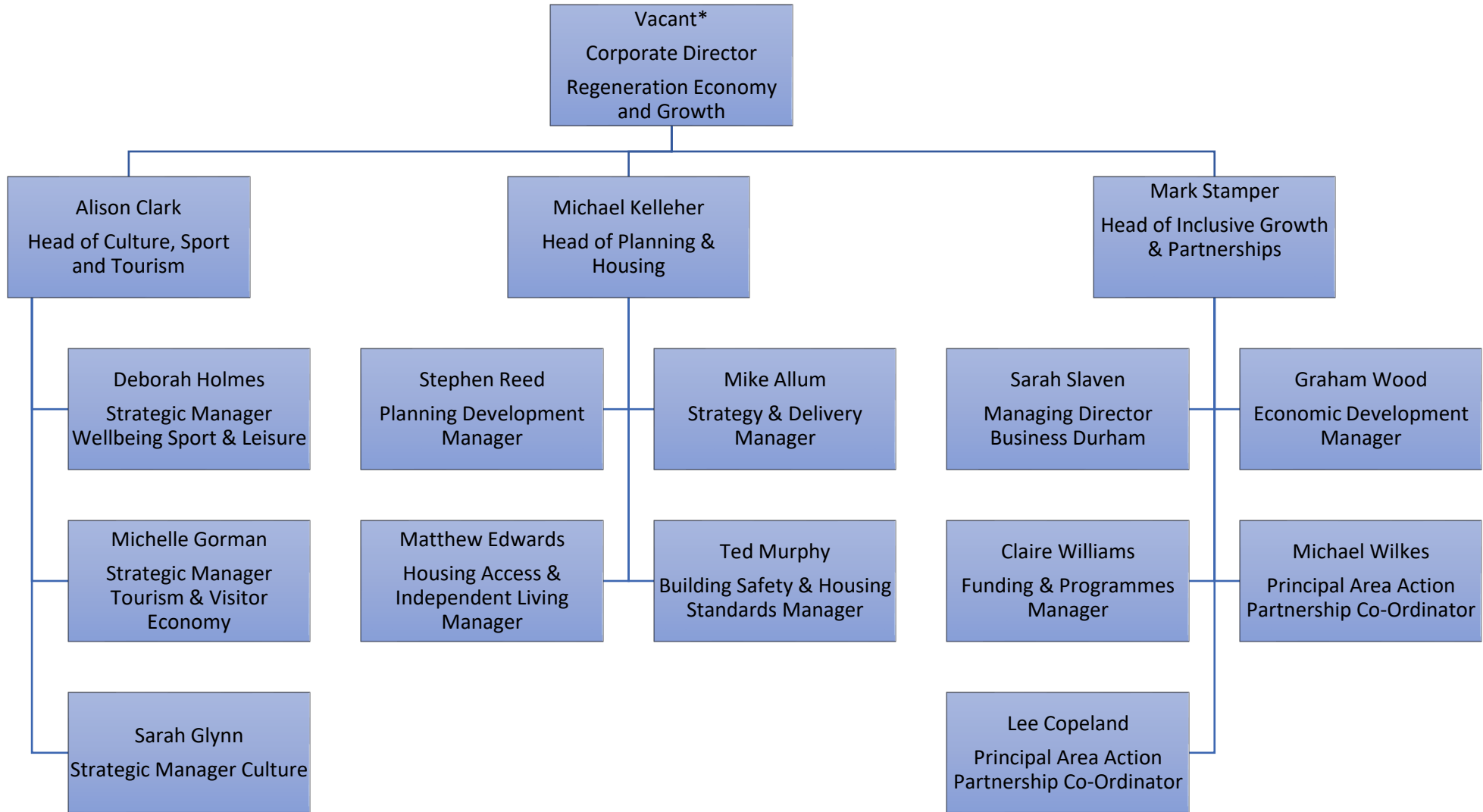


Regeneration Economy and Growth Structure



Text version of Regeneration Economy and Growth Structure

- Vacant - Corporate Director Regeneration, Economy and Growth*
 - Alison Clark, Head of Culture, Sport and Tourism
 - Deborah Holmes, Strategic Manager Wellbeing Sport & Leisure
 - Michelle Gorman, Strategic Manager Tourism & Visitor Economy
 - Sarah Glynn, Strategic Manager Culture
 - Michael Kelleher, Head of Planning and Housing
 - Stephen Reed, Planning Development Manager
 - Mike Allum, Strategy & Delivery Manager
 - Matthew Edwards, Housing Access & Independent Living Manager
 - Ted Murphy, Building Safety & Housing Standards Manager
 - Mark Stamper, Head of Inclusive, Growth & Partnerships
 - Sarah Slaven, Managing Director Business Durham
 - Graham Wood, Economic Development Manager
 - Claire Williams, Funding & Programmes Manager
 - Michael Wilkes, Principal Area Action Partnership Co-ordinator
 - Lee Copeland, Principal Area Action Partnership Co-ordinator

*Please note, Head of Service posts within this structure report to John Hewitt (Chief Executive Officer) in the interim