

Special Educational Needs and Disability Strategy for County Durham Local Area Partnership

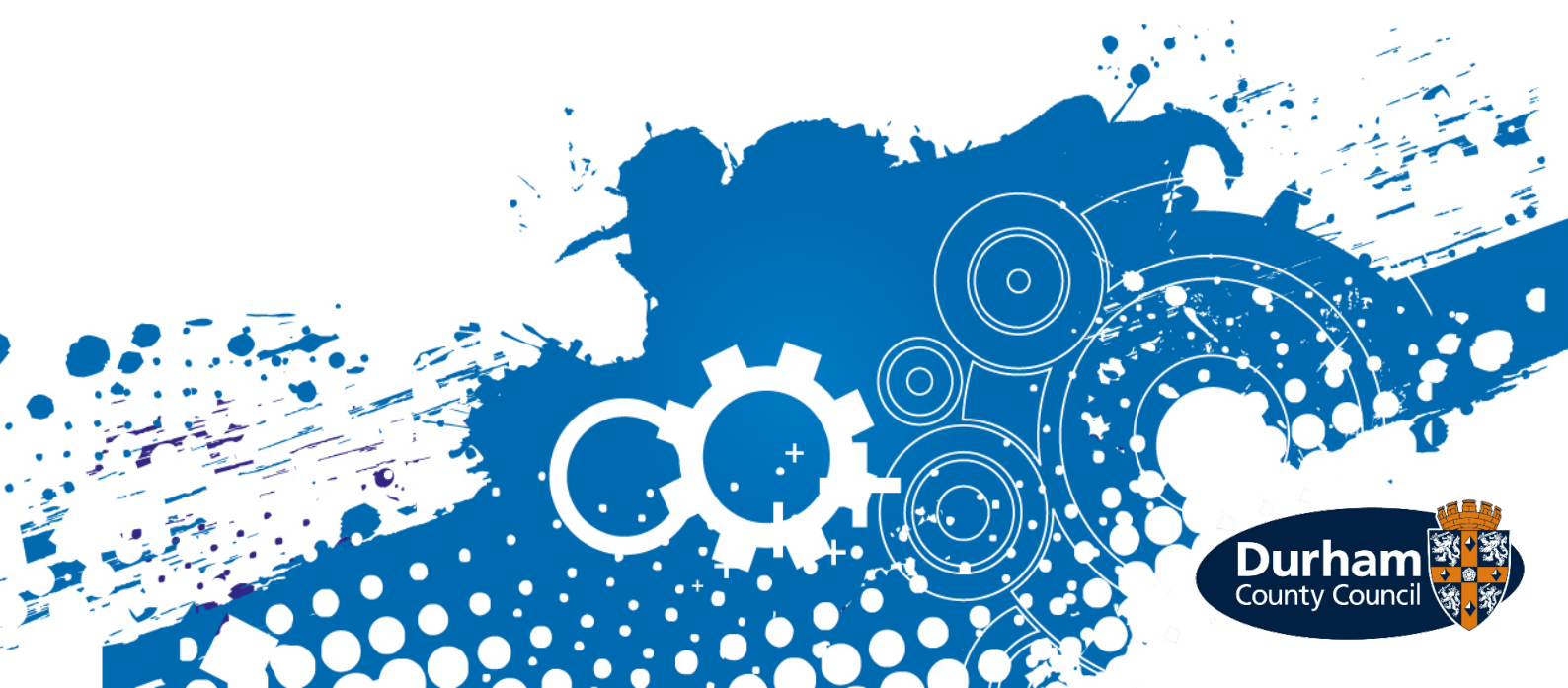
Children and Young People's Version

2022 – 2024



Contents

Section	Page number
Introduction and Vision	Page 1
Our Plan	Page 2
How we decided what went in our plan and how we will know it is working	Page 3
Making sure we deliver the plan and how to contribute to it	Page 4



Introduction

This is our local strategy for children and young people with Special Educational Needs and Disabilities (we also call this SEND).

This is a shorter version for children and young people to read. You might want to read with a trusted adult in case you have any questions.

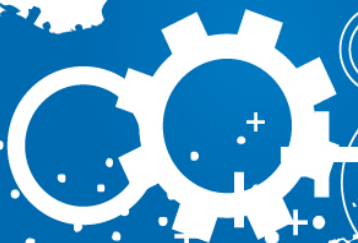
The strategy shows how the services and people in them are going to work together to make sure young people with Special Educational Needs and Disabilities thrive in their communities including home, school and neighbourhood.

We have worked with young people with Special Educational Needs and Disabilities and people who support them to describe what we want living in Durham to be like for children and young people with Special Educational Needs and Disabilities. We wrote our hopes into a vision for the future, which you can read as follows:

”

Our vision for children and young people with special educational needs and disabilities is the same as it is for all children and young people in County Durham: That they are safe and part of their community, have the best start in life, have good physical and mental health, and gain the education, skills and experiences to prepare them for adulthood

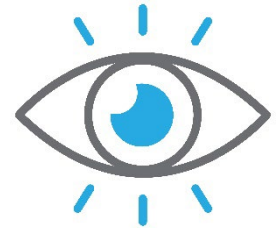
This strategy should be built on a foundation of strong relationships and clear and positive communication between children and young people with Special Educational Needs and Disabilities and those who support them.



To make this vision happen we have written a plan

This plan:

- ✓ Tells us what it is we need to do over the next two years. After that we will check how far we have come along to making things better.
- ✓ Helps us to make sure children and young people with Special Educational Needs and Disabilities enjoy the same opportunities as other children where they live and their school friends.
- ✓ Helps us to know whether what we are doing is working or if it isn't, so we can fix it.



Our plan is to make sure that:

- ✓ All children and young people go to a school which understands them and is able to help them to achieve their best. Ideally this should be close to where they live.
- ✓ We work with families to make sure we understand what they need and to give them the right kind of help to work through changes that happen in their lives.
- ✓ We listen to what children and young people are telling us and help them to feel part of their community, help them to work through changes or difficulties and to become as independent as possible (this means being able to do things for themselves).
- ✓ People who need help get the right kind of help as quickly as possible.
- ✓ Teachers and other staff working in our schools are able to understand the different needs of children and young people and help them to be healthy and happy members of their school community.
- ✓ The people who provide services for children and young people work together when they need to.



How we decided what went in the plan?

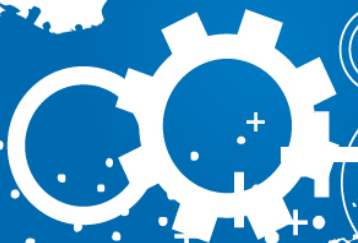
The Special Education Needs and Disabilities Code of Practice sets lots of laws which tell organisations the things they must do in their work. We looked at these laws to make sure that our plan includes everything we need it to. We also looked at some other plans which affect children and young people and used them to help us write our plan. We also talked to people who are interested in improving the lives of children with Special Educational Needs and Disabilities. These include:



- ✓ Children and young people themselves.
- ✓ Families.
- ✓ Schools and other places where children are educated such as nurseries.
- ✓ Services and teams who support children and young people across County Durham.
- ✓ The Special Educational Needs and Disabilities Strategic Partnership (a group of people whose work is about children in County Durham).
- ✓ Other professional people who work with children in County Durham such as Special Education Need Co-ordinators (SENCOs).
- ✓ Therapists.

We will know that our plans for inclusion are working when we see children and young people:

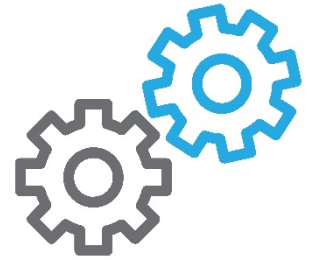
- ✓ Going into school every day.
- ✓ Taking part in activities in their school community.
- ✓ Achieving what they should in school in a way that suits them.
- ✓ Feeling like they belong in their community.
- ✓ Working towards being as independent as possible.



How do we make sure the plan is working?

The Special Educational Needs and Disabilities Strategic Partnership is a group of people from all the different organisations who work to together to make sure we do what we said we would do in our plan.

They get information from teachers, parents and other people who work with children and young people which helps them understand how the plan is working. If anything needs to be changed, the partners in this group can make that happen.



Your views

If you have anything you'd like to ask about the Special Educational Needs and Disabilities Strategy for County Durham Local Area Partnership 2022 – 2024 or if you'd like to let us know what you think about it and what you'd like to see included in our plans for the future, you can contact us at

SENDInclusionAdmin@durham.gov.uk

or contact Investing in Children with your views by email at

info@investinginchildren.net

