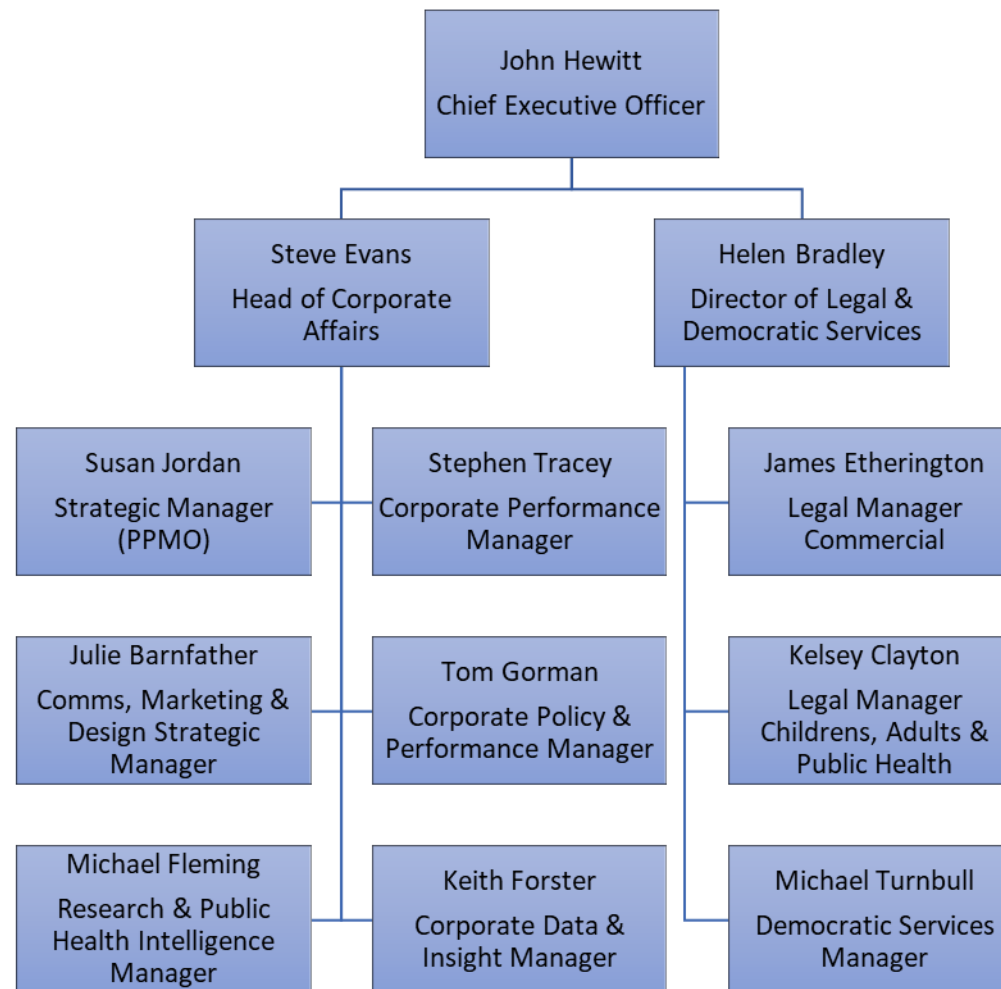


## Chief Executive's Service Structure



## Text version of Chief Executive's Service Structure

- John Hewitt – Chief Executive Officer
  - Steve Evans – Head of Corporate Affairs
    - Susan Jordan, Strategic Manager (PPMO)
    - Stephen Tracey, Corporate Equality & Strategy Manager
    - Julie Barnfather, Comms, Marketing & Design Strategic Manager
    - Tom Gorman, Corporate Policy & Performance Manager
    - Michael Fleming, Research & Public Health Intelligence Manager
    - Keith Forster, Corporate Data & Insight Manager
  - Helen Bradley – Director of Legal & Democratic Services
    - James Etherington, Legal Manager Commercial
    - Kelsey Clayton, Legal Manager – Childrens, Adults & Public Health
    - Michael Turnbull, Democratic Services Manager