

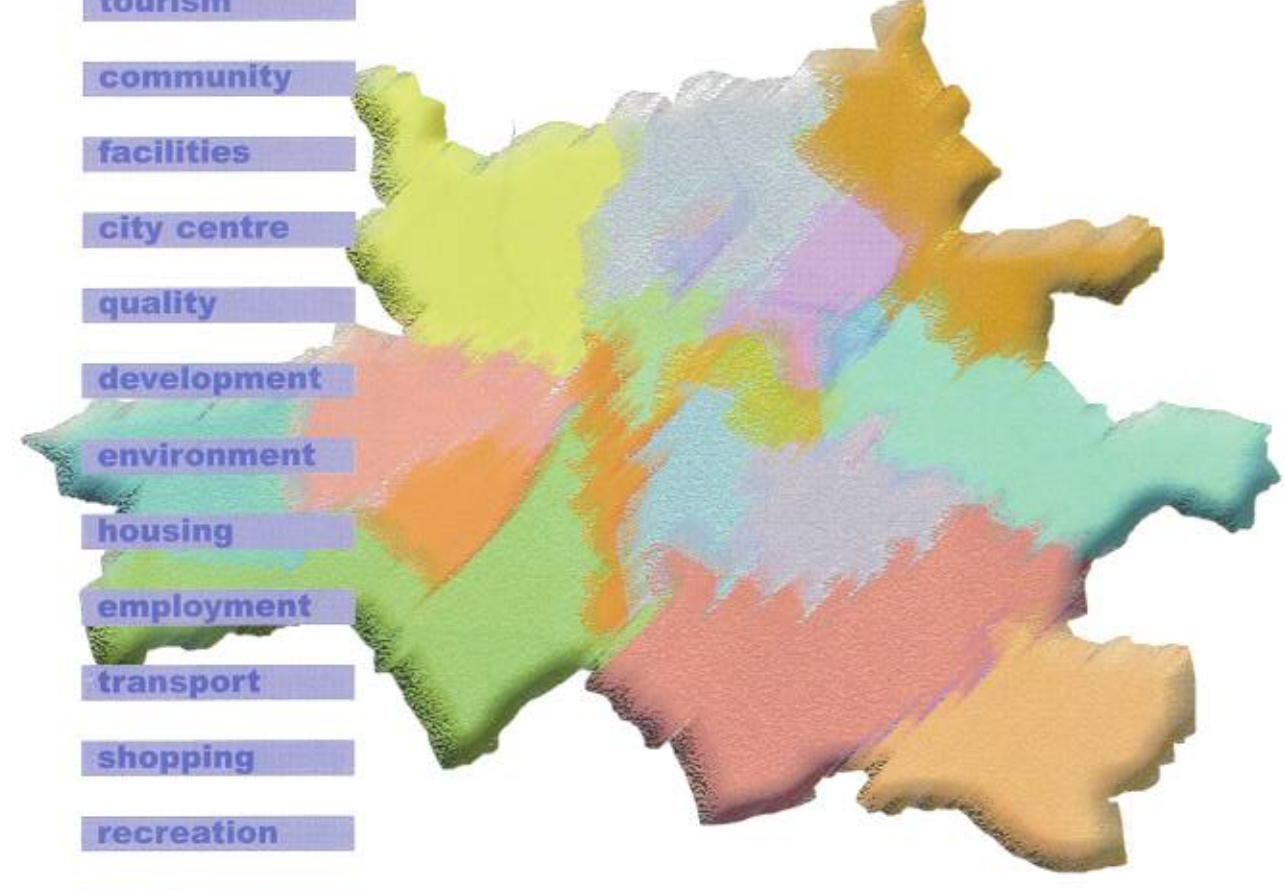
City of Durham

Local Plan May 2004

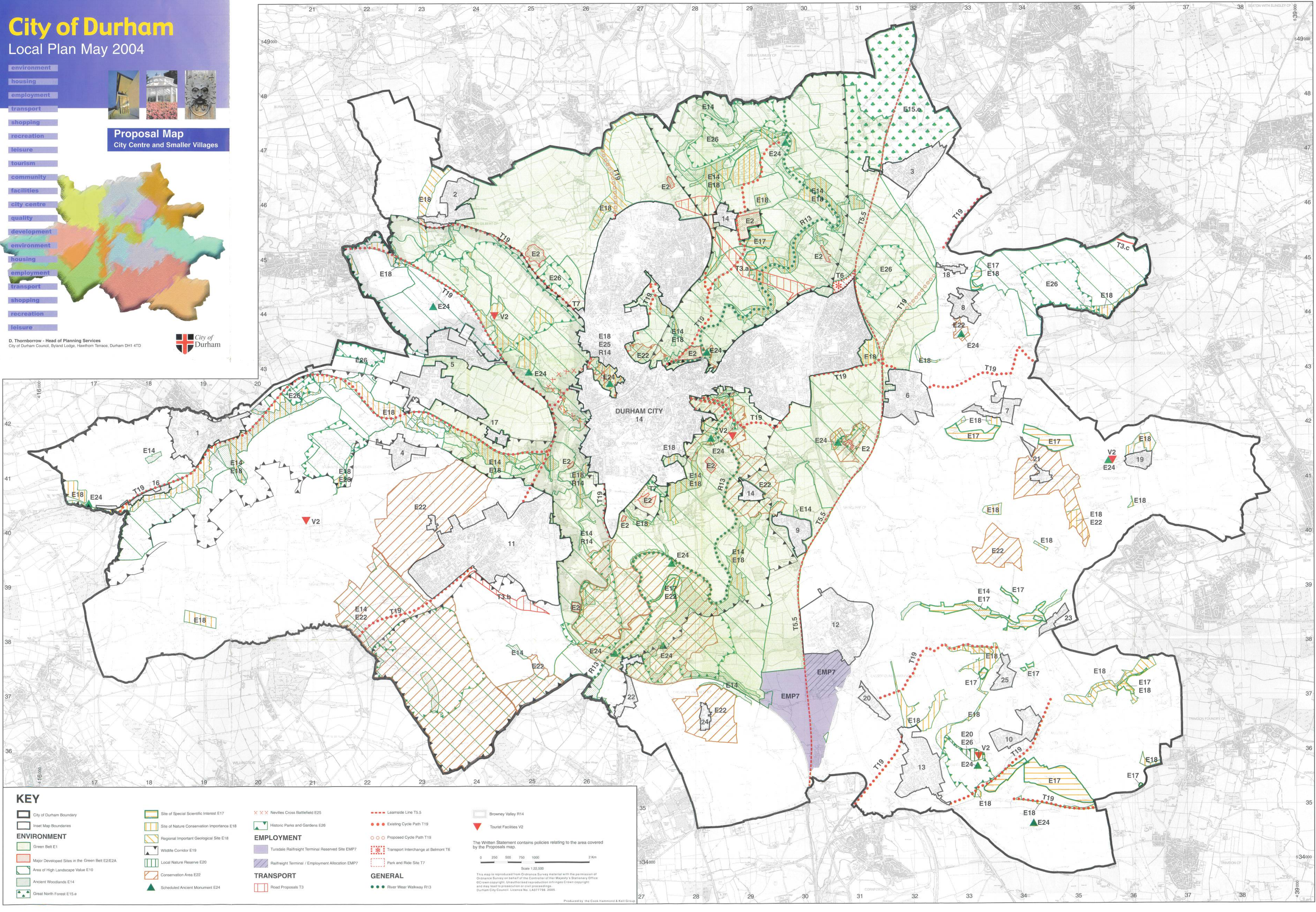
- environment
- housing
- employment
- transport
- shopping
- recreation
- leisure
- tourism
- community
- facilities
- city centre
- quality
- development
- environment
- housing
- employment
- transport
- shopping
- recreation
- leisure



Proposal Map City Centre and Smaller Villages



D. Thornborrow - Head of Planning Services
City of Durham Council, Byland Lodge, Hawthorn Terrace, Durham DH1 4TD



KEY

- | | | | | |
|--|--|---|-------------------------|-------------------------------------|
| City of Durham Boundary | Site of Special Scientific Interest E17 | Nevilles Cross Battlefield E25 | Leamsdale Line T5.5 | Browney Valley R14 |
| Inset Map Boundaries | Site of Nature Conservation Importance E18 | Historic Parks and Gardens E26 | Existing Cycle Path T19 | Tourist Facilities V2 |
| ENVIRONMENT | Regional Important Geological Site E18 | EMPLOYMENT | Proposed Cycle Path T19 | Transport Interchange at Belmont T6 |
| Green Belt E1 | Wildlife Corridor E19 | Tursdale Railright Terminal Reserved Site EMP2 | Park and Ride Site T7 | Leamsdale Line T5.5 |
| Major Developed Sites in the Green Belt E2/E2A | Local Nature Reserve E20 | Railright Terminal / Employment Allocation EMP7 | Leamsdale Line T5.5 | Tourist Facilities V2 |
| Area of High Landscape Value E10 | Conservation Area E22 | TRANSPORT | Leamsdale Line T5.5 | Leamsdale Line T5.5 |
| Ancient Woodlands E14 | Scheduled Ancient Monument E24 | Road Proposals T3 | Leamsdale Line T5.5 | Leamsdale Line T5.5 |
| Great North Forest E15.e | | GENERAL | Leamsdale Line T5.5 | Leamsdale Line T5.5 |
| | | River Wear Walkway R13 | Leamsdale Line T5.5 | Leamsdale Line T5.5 |

The Written Statement contains policies relating to the area covered by the Proposals map.

0 250 500 750 1000 2 Km

Scale 1:22,500

This map is reproduced from Ordnance Survey material with the permission of Ordnance Survey on behalf of the Controller of the Stationery Office. © Crown copyright. Unauthorised reproduction infringes Crown copyright and may lead to prosecution or civil proceedings. Durham City Council Licence No. LA07798, 2005.

Produced by the Cook Hammond & Kell Group